



[®]
**Eagle
Jumbo**

[®]
**GENERAL
INDUSTRY**


TAIGA
TRACTION


QUALITY
CHAIN CORP


QCC
traction products


NORDIC™
tire chains
engineered in Canada


NORDIC™
GENESIS
TRACKS


NYVAB



Eagle Jumbo Co.,Ltd. General Industry Co.,Ltd.

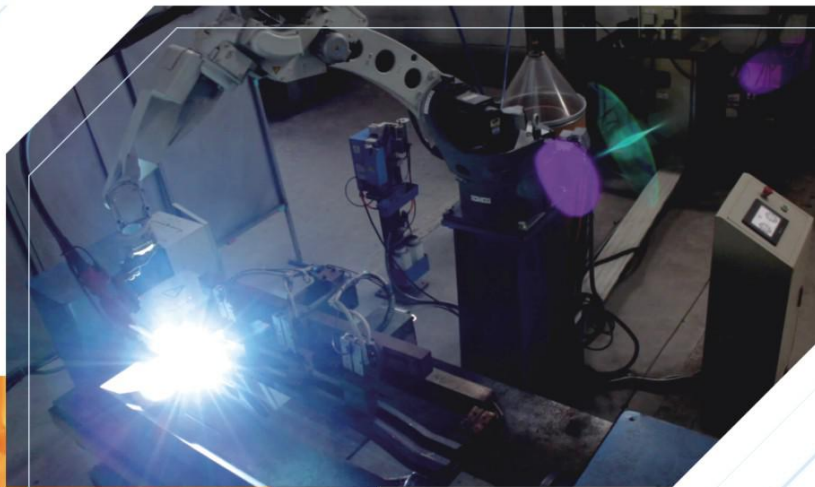
General Industry Co. Ltd. (Internationally, "Eagle Jumbo Co. Ltd.") is devoted to building best in class traction products. With 28 years of experience, General Industry has invested heavily in our people and our products. Our highly skilled staff aided by our fully automated production lines, consisting of robotic welders, link forming machinery and heat-treatment furnaces for the foundation of General Industry. Through continuous testing and refinement of the chain and track manufacturing process, we have made a name for ourselves in the International community.

Our diverse product portfolio includes tire chain to fit every piece of equipment that moves. Forestry chain, forestry tracks, tire protection chain (TPC), flail link chain and more. Our products are built to allow safe travel of people and equipment, in the most demanding environments. The passion we have in providing high-quality and consistent products, has allowed our worldwide partners to sell with pride. Through our partners Quality Chain Corp USA and QC Canada, we have won competitive bids to build tire chain for the U.S. Government and the Canadian Military, serving as a testimony to our high-quality guarantee.

General Industry invites you to inquire about our company, our products and our passion. If we feel you are a good fit for us, join us as partners and grow with our team. Together, we can chain up for a brighter future.

INTRODUCTION





A. TAIGA track bar profiles

There are 5 track bars currently in production. The models of these bars are MT86, OV88, OV86, SF120 and FF150.



MT86



OV88



OV86



FF150



SF120

To meet the needs of every environment, TAIGA tracks were designed with that in mind. Any model can be built on its own or mixed with others to create the ultimate track solution. Please state your requirements at time of order.



B. How to identify the link system, bar size and stud placement

TAIGA tracks currently have a heavy-duty link system, designed to be the strongest at 32mm.

There are currently 4 main bar profiles and stud placement. These are categorized by 11, 22, 21 & 31 after the link system 32. -3211/ -3222/ -3221 and -3231. Heavy forged (75mmX60mmX32mm) track studs are used as standard for extreme traction applications.



1. -3211 There are 2 track studs per bar. Fits Nordman Forest F/ BKT Forestech/ Alliance 343 Forestar



2. -3222 There is 1 track stud per bar, alternating from bar to bar. Fits Nordman Forest F/ BKT Forestech/ Alliance 343 Forestar



3. -3221 There are 2 track studs per bar with an additional grip bar welded to the underside of the track bar for extreme grip. Only to be used on Nokian Forest King F2.



4. -3231 There are 2 track studs per bar. Designed for Nokian Forest King F2 and Alliance 643 Forestar III

C. European track studs

TAIGA tracks offer studs ideal for the European market, providing less disturbance to the forest floor. Any track can be produced with the smaller European (60mmX50mmX32mm or 45mmx40mmx32mm) track stud.



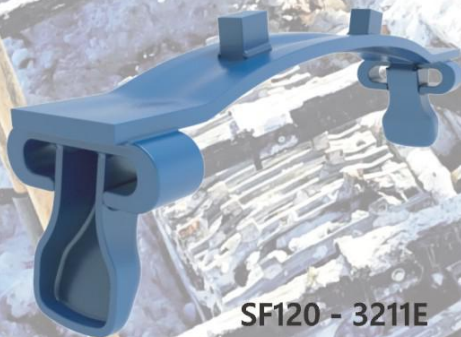
FF150-3211E



OV86-3211E



MT86-3211E



SF120 - 3211E

Important Information-Ordering and Welding of track studs

Thank you for selecting TAIGA tracks.

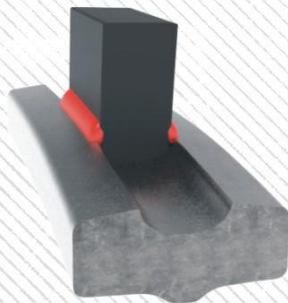
TAIGA tracks are made from high-quality Boron Alloy steel and heat treated differently from the competition. This process has allowed TAIGA tracks to be used and trusted by the largest forestry machines in the world.

When ordering TAIGA tracks, please make sure to list the following information:

1. Tire-size, make and model.
2. Distance from axle center to axle center if machine is not listed in our system.
3. Distance from the top of the tire to the undercarriage of the machine.
4. List the ground conditions most common in your market and what level of traction or floatation is needed.

TAIGA tracks are strong and use forgings when long life is needed. While our larger tracks studs (75mmX60mmX32mm) may last the life of the track, the European track stud (45mmx40mmx32mm) may need to be replaced 1/2 way. When welding track studs please pay close attention to the welding requirements below.

1. The track studs are made of forged CrV alloy. Please make sure before welding that the studs and track bar are clean of dirt and dry.
2. Weld the track studs along its length only. Do not weld around the track stud at the ends.
3. If possible, pre-heat the track studs and track bars to 300 degrees C. Keep the welded track bars and studs at 200 degrees C for 1 hour. Failure to do so may result in loss of warranty.



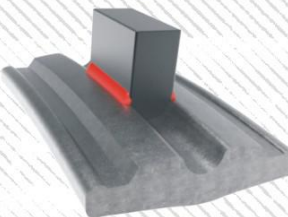
Step 1

Start by locating all studs in place. Do not place studs on the centre of the track pad, nor within 100mm of existing grousers.

To avoid overheating the track bar, work along and round the track as per steps 2 – 5 below.

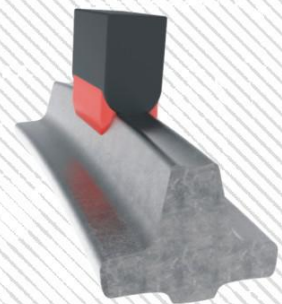
Step 2

Work along length of track, welding only 1 side of the stud, no greater than 5mm fillet weld.



Step 3

Work down other side of track, welding only 1 side of the stud, no greater than 5mm fillet weld.



Step 4

Work along the first side of the track (step 2), performing the second weld per stud.

Step 5

Finish by working along the second side (as started in step 3), completing the second weld per stud.

Stud Welding Procedure

MT86 Tracks

1. The MT86 track is designed for optimum performance in Mountainous (MT) terrain.
2. 32mm forged connecting links have unmatched strength and longevity.
3. 2 large, forged track studs (75mmX60mmX32mm) per bar allow the track to climb the steepest terrain.
4. 1 track tightener, 8 pieces Konnect-125, 4 pieces Konnect-175 and 4 pcs of Konnect-255 are supplied free with each track.
5. The last bar of each track is attached with Konnect-125 and can be removed if needed.



MT86-3211



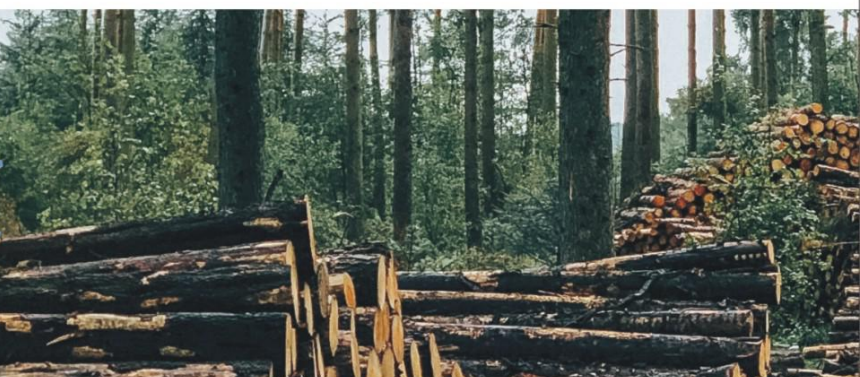
Model	Stock#	Fitting Tire Size	Numbers of Cross Bar(pcs/1/2pair)	Wt./pair kg
3211	MT86 600/55-3211	600/55-26.5	30	1742
	MT86 710/45-3211	710/45-26.5	30	1873
	MT86 750/55-3211	750/55-26.5	36	2295
	MT86 780/50-3211	780/50-28.5	36	2350

MT86-3211E



Model	Stock#	Fitting Tire Size	Numbers of Cross Bar(pcs/1/2pair)	Wt./pair kg
3211E	MT86 600/55-3211E	600/55-26.5	30	1681
	MT86 710/45-3211E	710/45-26.5	30	1812
	MT86 750/55-3211E	750/55-26.5	36	2222
	MT86 780/50-3211E	780/50-28.5	36	2277

※Stock* with suffix “E” at the end of the part number means the track is designed for the European market. These tracks reflect the European concept of saving energy and being friendly to the environment. European track studs supplied (45mmx40mmx32mm)



For tire sizes not listed above, please contact manufacturer or local suppliers.

1. The MT86 track is designed for optimum performance in Mountainous (MT) terrain.
2. 32mm forged connecting links have unmatched strength and longevity.
3. 1 large forged alternating track stud (75mmX60mmX32mm) per bar allow less ground disturbance vs the 2-stud variation.
4. 1 track tightener, 8 pieces Konnect-125, 4 pieces Konnect-175 and 4 pcs of Konnect-255 are supplied free with each track.
5. The last bar of each track is attached with Konnect-125 and can be removed if needed.



MT86-3222

Model	Stock#	Fitting Tire Size	Numbers of Cross Bar(pcs/1/2pair)	Wt./pair kg
3222	MT86 600/55-3222	600/55-26.5	30	1674
	MT86 710/45-3222	710/45-26.5	30	1805
	MT86 750/55-3222	750/55-26.5	36	2214
	MT86 780/50-3222	780/50-28.5	36	2269



MT86-3222E

Model	Stock#	Fitting Tire Size	Numbers of Cross Bar(pcs/1/2pair)	Wt./pair kg
3222E	MT86 600/55-3222E	600/55-26.5	30	1643
	MT86 710/45-3222E	710/45-26.5	30	1775
	MT86 750/55-3222E	750/55-26.5	36	2177
	MT86 780/50-3222E	780/50-28.5	36	2232



※Stock* with suffix “E” at the end of the part number means the track is designed for the European market. These tracks reflect the European concept of saving energy and being friendly to the environment. European track studs supplied (45mmx40mmx32mm)



For tire sizes not listed above, please contact manufacturer or local suppliers.



MT86 Tracks

1. The MT86 track with additional tire grip bar allows a NO slip environment, allowing extreme traction in a moments notice. This (MT) track will take your machine to places it could never go before.
2. 32mm forged connecting links have unmatched strength and longevity.
3. 2 large, forged track studs (75mmX60mmX32mm) per bar allow the track to climb the steepest terrain.
4. 1 track tightener, 8 pieces Konnect-125, 4 pieces Konnect-175 and 4 pcs of Konnect-255 are supplied free with each track.
5. The last bar of each track is attached with Konnect-125 and can be removed if needed.

MT86-3221



Model	Stock#	Fitting Tire Size	Numbers of Cross Bar(pcs/1/2pair)	Wt./pair kg
3221	MT86 600/55-3221	600/55-26.5	30	1780
	MT86 710/45-3221	710/45-26.5	30	1911
	MT86 750/55-3221	750/55-26.5	36	2341
	MT86 780/50-3221	780/50-28.5	36	2396



MT86-3221E

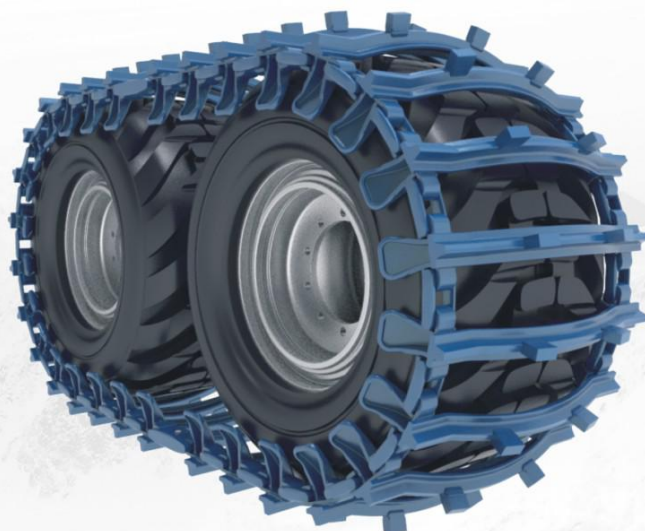


Model	Stock#	Fitting Tire Size	Numbers of Cross Bar(pcs/1/2pair)	Wt./pair kg
3221E	MT86 600/55-3221E	600/55-26.5	30	1719
	MT86 710/45-3221E	710/45-26.5	30	1850
	MT86 750/55-3221E	750/55-26.5	36	2268
	MT86 780/50-3221E	780/50-28.5	36	2323

※Stock* with suffix "E" at the end of the part number means the track is designed for the European market. These tracks reflect the European concept of saving energy and being friendly to the environment. European track studs supplied (45mmx40mmx32mm)

For tire sizes not listed above, please contact manufacturer or local suppliers.

1. The MT86 track is designed for optimum performance in Mountainous (MT) terrain.
2. A special bar geometry is used to fit the Nokian Forest King F2.
3. 32mm forged connecting links have unmatched strength and longevity.
4. 2 large, forged track studs (75mmX60mmX32mm) per bar allow the track to climb the steepest terrain.
5. 1 track tightener, 8 pieces Konnect-125, 4 pieces Konnect-175 and 4 pcs of Konnect-255 are supplied free with each track.
6. The last bar of each track is attached with Konnect-125 and can be removed if needed.



MT86-3231

Model	Stock#	Fitting Tire Size	Numbers of Cross Bar(pcs/1/2pair)	Wt./pair kg
3231	MT86 600/55-3231	600/55-26.5	30	1820
	MT86 710/45-3231	710/45-26.5	30	1951
	MT86 750/55-3231	750/55-26.5	36	2403
	MT86 780/50-3231	780/50-28.5	36	2458



MT86-3231E

Model	Stock#	Fitting Tire Size	Numbers of Cross Bar(pcs/1/2pair)	Wt./pair kg
3231E	MT86 600/55-3231E	600/55-26.5	30	1759
	MT86 710/45-3231E	710/45-26.5	30	1890
	MT86 750/55-3231E	750/55-26.5	36	2330
	MT86 780/50-3231E	780/50-28.5	36	2385



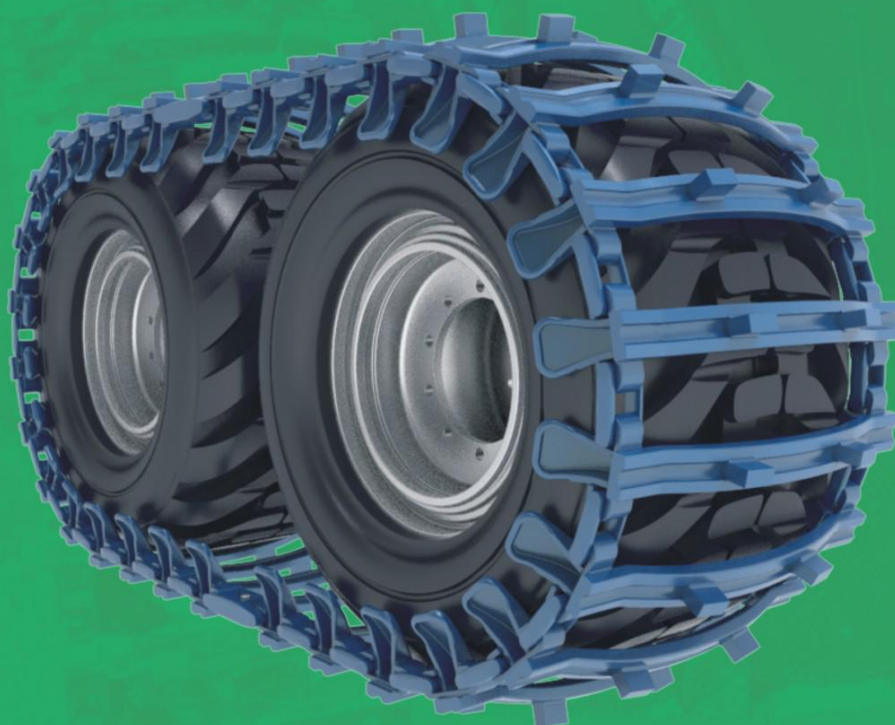
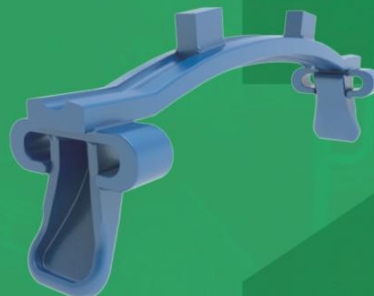
※Stock* with suffix “E” at the end of the part number means the track is designed for the European market. These tracks reflect the European concept of saving energy and being friendly to the environment. European track studs supplied (45mmx40mmx32mm)

For tire sizes not listed above, please contact manufacturer or local suppliers.

OV88 TRACK

OV88-3211

1. The OV88 track is designed for Overland (OV) all-terrain operation. Its size, strength and longevity cannot be matched.
2. 32mm forged connecting links have unmatched strength and longevity.
3. 2 large, forged track studs per bar allow the track to pull and carry vastly oversized loads.
4. 1 track tightener, 8 pieces Konnect-125, 4 pieces Konnect-175 and 4 pcs of Konnect-255 are supplied free with each track.
5. The last bar of each track is attached with Konnect-125 and can be removed if needed.



Model	Stock#	Fitting Tire Size	Numbers of Cross Bar(pcs/1/2pair)	Wt./pair
				kg
3211	OV88 600/55-3211	600/55-26.5	30	2166
	OV88 710/45-3211	710/45-26.5	30	2401
	OV88 750/55-3211	750/55-26.5	36	2957
	OV88 780/50-3211	780/50-28.5	36	3034

For tire sizes not listed above, please contact manufacturer or local suppliers.

OV88-3231

1. The OV88 track is designed for Overland (OV) all-terrain operation. Its size, strength and longevity cannot be matched.
2. A special bar geometry is used to fit the Nokian Forest King F2.
3. 32mm forged connecting links have unmatched strength and longevity.
4. 2 large, forged track studs (75mmX60mmX32mm) per bar allow the track to pull and carry vastly oversized loads.
5. 1 track tightener, 8 pieces Konnect-125, 4 pieces Konnect-175 and 4 pcs of Konnect-255 are supplied free with each track.
6. The last bar of each track is attached with Konnect-125 and can be removed if needed.



Model	Stock#	Fitting Tire Size	Numbers of Cross Bar(pcs/1/2pair)	Wt./pair kg
3231	OV88 600/55-3231	600/55-26.5	30	2317
	OV88 710/45-3231	710/45-26.5	30	2515
	OV88 750/55-3231	750/55-26.5	36	3137
	OV88 780/50-3231	780/50-28.5	36	3200

OV88-3222

1. The OV88 track is designed for Overland (OV) all-terrain operation. Its size, strength and longevity cannot be matched.
2. 32mm forged connecting links have unmatched strength and longevity.
3. 1 European forged alternating track stud (75mmX60mmX32mm) per bar allow less ground disturbance vs. the 2-stud variation.
4. 1 track tightener, 8 pieces Konnect-125, 4 pieces Konnect-175 and 4 pcs of Konnect-255 are supplied free with each track.
5. The last bar of each track is attached with Konnect-125 and can be removed if needed.



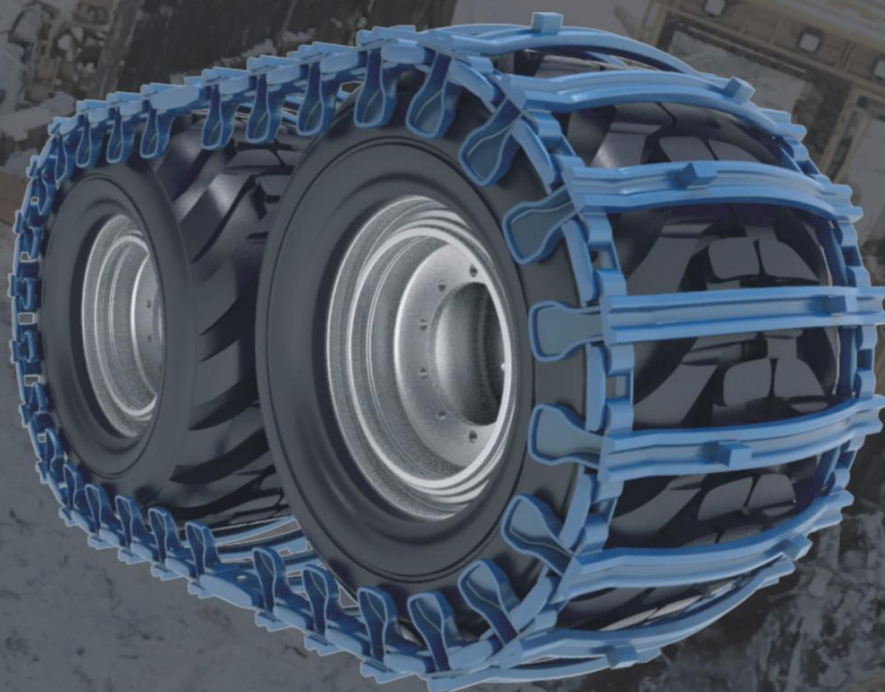
Model	Stock#	Fitting Tire Size	Numbers of Cross Bar(pcs/1/2pair)	Wt./pair kg
3222	OV88 600/55-3222	600/55-26.5	30	2100
	OV88 710/45-3222	710/45-26.5	30	2335
	OV88 750/55-3222	750/55-26.5	36	2876
	OV88 780/50-3222	780/50-28.5	36	2953

For tire sizes not listed above, please contact manufacturer or local suppliers.

OV86 TRACK

OV86-3222E

1. The OV86 track has the same overall profile of its larger brother the OV88 but has a much lower profile and is lighter weight.
2. 28mm forged connecting links were designed to match the lightweight OV86 track.
3. 1 European forged alternating track stud (60mmX50mmX32mm) per bar allow less ground disturbance vs. the 2-stud variation.
4. 1 track tightener, 8 pieces Konnect-125, 4 pieces Konnect-175 and 4 pcs of Konnect-255 are supplied free with each track.
5. The last bar of each track is attached with Konnect-125 and can be removed if needed.



Model	Stock#	Fitting Tire Size	Numbers of Cross Bar(pcs/1/2pair)	Wt./pair kg
3222E-93	OV86 600/55-3222E-93	600/55-26.5	29	1796
	OV86 710/45-3222E-93	710/45-26.5	29	1902
	OV86 750/55-3222E-93	750/55-26.5	35	2352
	OV86 780/50-3222E-93	780/50-28.5	35	2425

※Stock* with suffix "E" at the end of the part number means the track is designed for the European market. These tracks reflect the European concept of saving energy and being friendly to the environment. European track studs supplied (60mmX50mmX32mm)

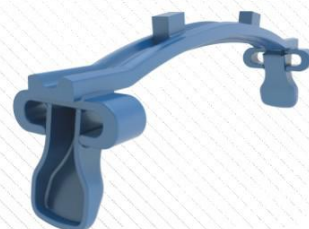
For tire sizes not listed above, please contact manufacturer or local suppliers.

OV86-3211E

1. The OV86 track has the same overall profile of its larger brother the OV88 but has a much lower profile and is lighter weight.
2. 28mm forged connecting links were designed to match the lightweight OV86 track.
3. 2 European forged track studs (60mmX50mmX32mm) per bar, allow this track to have less impact on the environment.
4. 1 track tightener, 8 pieces Konnect-125, 4 pieces Konnect-175 and 4 pcs of Konnect-255 are supplied free with each track.
5. The last bar of each track is attached with Konnect-125 and can be removed if needed.



Model	Stock#	Fitting Tire Size	Numbers of Cross Bar(pcs/1/2pair)	Wt./pair kg
3211E-93	OV86 600/55-3211E-93	600/55-26.5	29	1832
	OV86 710/45-3211E-93	710/45-26.5	29	1938
	OV86 750/55-3211E-93	750/55-26.5	35	2396
	OV86 780/50-3211E-93	780/50-28.5	35	2468



※Stock* with suffix “E” at the end of the part number means the track is designed for the European market. These tracks reflect the European concept of saving energy and being friendly to the environment. European track studs supplied (60mmX50mmX32mm)

OV86-3231E

1. The OV86 track has the same overall profile of its larger brother the OV88 but has a much lower profile and is lighter weight.
2. A special bar geometry is used to fit the Nokian Forest King F2.
3. 28mm forged connecting links were designed to match the lightweight OV86 track.
4. 2 European forged track studs (60mmX50mmX32mm) per bar, allow this track to have less impact on the environment.
5. 1 track tightener, 8 pieces Konnect-125, 4 pieces Konnect-175 and 4 pcs of Konnect-255 are supplied free with each track.
6. The last bar of each track is attached with Konnect-125 and can be removed if needed.



Model	Stock#	Fitting Tire Size	Numbers of Cross Bar(pcs/1/2pair)	Wt./pair kg
3231E-93	OV86 600/55-3231E-93	600/55-26.5	29	1918
	OV86 710/45-3231E-93	710/45-26.5	29	2028
	OV86 750/55-3231E-93	750/55-26.5	35	2522
	OV86 780/50-3231E-93	780/50-28.5	35	2568



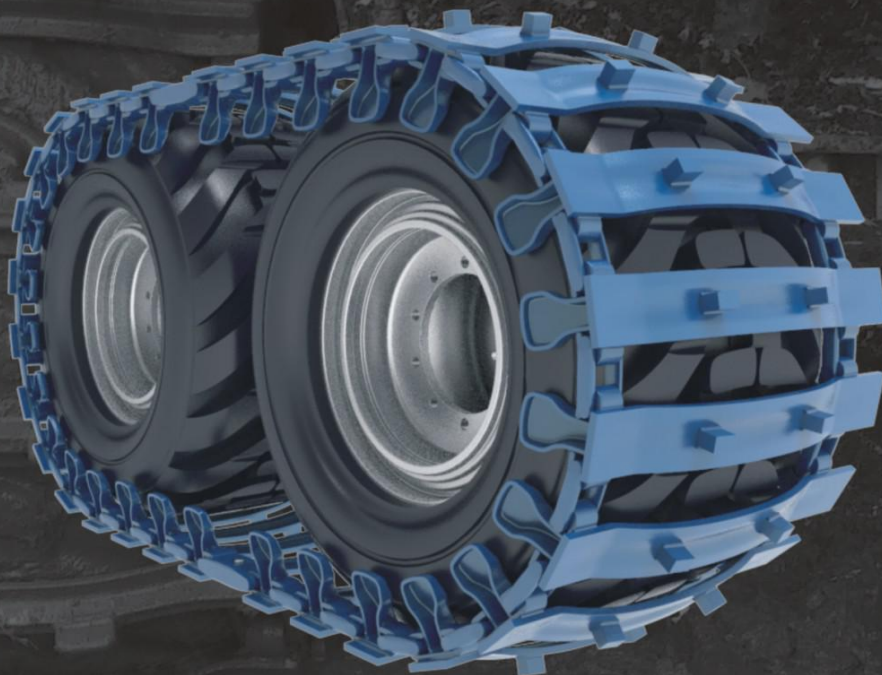
※Stock* with suffix “E” at the end of the part number means the track is designed for the European market. These tracks reflect the European concept of saving energy and being friendly to the environment. European track studs supplied (60mmX50mmX32mm)

For tire sizes not listed above, please contact manufacturer or local suppliers.

SF120 Tracks



1. The SF120 track (120mm wide) is designed for cost effective Super Flootation (SF) with good grip.
2. A special bar geometry is used to fit the Nokian Forest King F2.
3. 28mm forged connecting links were designed to match the lightweight track.
4. 2 European forged track studs (45mmx40mmx32mm) per bar, allow this track to have minimal impact on the environment and good grip.
5. 1 track tightener, 8 pieces Konnect-125, 4 pieces Konnect-175 and 4 pcs of Konnect-255 are supplied free with each track.
6. The last bar of each track is attached with Konnect-125 and can be removed if needed.



SF120-3231E

Model	Stock#	Fitting Tire Size	Numbers of Cross Bar(pcs/1/2pair)	Wt./pair
				kg
3231E-93	SF120 600/55-3231E-93	600/55-26.5	29	1494
	SF120 710/45-3231E-93	710/45-26.5	29	1584
	SF120 750/55-3231E-93	750/55-26.5	35	1958
	SF120 780/50-3231E-93	780/50-28.5	35	1988

※Stock* with suffix "E" at the end of the part number means the track is designed for the European market. These tracks reflect the European concept of saving energy and being friendly to the environment. European track studs supplied (45mmx40mmx32mm)

For tire sizes not listed above, please contact manufacturer or local suppliers.

1. The SF120 track is designed for cost effective Super Floatation (SF) with good grip.
2. 28mm forged connecting links were designed to match the lightweight track.
3. 2 European forged track studs (45mmx40mmx32mm) per bar, allow this track to have minimal impact on the environment and good grip.
4. 1 track tightener, 8 pieces Konnect-125, 4 pieces Konnect-175 and 4 pcs of Konnect-255 are supplied free with each track.
5. The last bar of each track is attached with Konnect-125 and can be removed if needed.



SF120-3211E



Model	Stock#	Fitting Tire Size	Numbers of Cross Bar(pcs/1/2pair)	Wt./pair kg
3211E-93	SF120 600/55-3211E-93	600/55-26.5	29	1442
	SF120 710/45-3211E-93	710/45-26.5	29	1532
	SF120 750/55-3211E-93	750/55-26.5	35	1886
	SF120 780/50-3211E-93	780/50-28.5	35	1916

※Stock* with suffix "E" at the end of the part number means the track is designed for the European market. These tracks reflect the European concept of saving energy and being friendly to the environment. European track studs supplied (45mmx40mmx32mm)

1. The SF120 track is designed for cost effective Super Floatation (SF) with good grip.
2. 28mm forged connecting links were designed to match the lightweight track.
3. 1 European forged alternating track stud (45mmx40mmx32mm) per bar allow the least amount of ground disturbance.
4. 1 track tightener, 8 pieces Konnect-125, 4 pieces Konnect-175 and 4 pcs of Konnect-255 are supplied free with each track.
5. The last bar of each track is attached with Konnect-125 and can be removed if needed.



SF120-3222E



Model	Stock#	Fitting Tire Size	Numbers of Cross Bar(pcs/1/2pair)	Wt./pair kg
3222E-93	SF120 600/55-3222E-93	600/55-26.5	29	1378
	SF120 710/45-3222E-93	710/45-26.5	29	1468
	SF120 750/55-3222E-93	750/55-26.5	35	1808
	SF120 780/50-3222E-93	780/50-28.5	35	1838

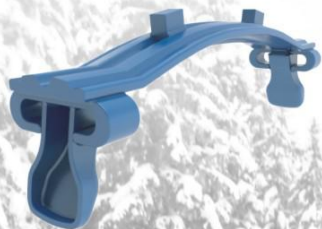
※Stock* with suffix "E" at the end of the part number means the track is designed for the European market. These tracks reflect the European concept of saving energy and being friendly to the environment. European track studs supplied (45mmx40mmx32mm)

For tire sizes not listed above, please contact manufacturer or local suppliers.

FF150 Tracks

- 1.The FF150 track (150mm wide) is forged for strength and durability, while also providing the best floatation and lowest ground pressure in soft soil and wet land.
- 2.2 European forged track studs (60mmX50mmX32mm) per bar, allow this track to have minimal impact on the environment and good grip.
- 3.1 track tightener, 8 pieces Konnect-125, 4 pieces Konnect-175 and 4 pcs of Konnect-255 are supplied free with each track.
- 4.The last bar of each track is attached with Konnect-125 and can be removed if needed.

FF150-3211E



Model	Stock#	Fitting Tire Size	Numbers of Cross Bar(pcs/1/2pair)	Wt./pair kg
3211E-93	FF150 600/55-3211E-93	600/55-26.5	29	2179
	FF150 710/45-3211E-93	710/45-26.5	29	2359
	FF150 750/55-3211E-93	750/55-26.5	35	2930
	FF150 780/50-3211E-93	780/50-28.5	35	3006

※Stock* with suffix “E” at the end of the part number means the track is designed for the European market. These tracks reflect the European concept of saving energy and being friendly to the environment. European track studs supplied (60mmX50mmX32mm)



For tire sizes not listed above, please contact manufacturer or local suppliers.

1. The FF150 track (150mm wide) is forged for strength and durability, while also providing the best floatation and lowest ground pressure in soft soil and wet land.
2. A special bar geometry is used to fit the Nokian Forest King F2.
3. 2 European forged track studs (60mmX50mmX32mm) per bar, allow this track to have minimal impact on the environment and good grip.
4. 1 track tightener, 8 pieces Konnect-125, 4 pieces Konnect-175 and 4 pcs of Konnect-255 are supplied free with each track.
5. The last bar of each track is attached with Konnect-125 and can be removed if needed.



FF150-3231E



Model	Stock#	Fitting Tire Size	Numbers of Cross Bar(pcs/1/2pair)	Wt./pair kg
3231E-93	FF150 600/55-3231E-93	600/55-26.5	29	2318
	FF150 710/45-3231E-93	710/45-26.5	29	2498
	FF150 750/55-3231E-93	750/55-26.5	35	3094
	FF150 780/50-3231E-93	780/50-28.5	35	3168

※Stock* with suffix “E” at the end of the part number means the track is designed for the European market. These tracks reflect the European concept of saving energy and being friendly to the environment. European track studs supplied (60mmX50mmX32mm)

- 1.The FF150 track (150mm wide) is forged for strength and durability, while also providing the best floatation and lowest ground pressure in soft soil and wet land.
- 2.1 European forged alternating track stud (60mmX50mmX32mm) per bar allow the least amount of ground disturbance.
- 3.1 track tightener, 8 pieces Konnect-125, 4 pieces Konnect-175 and 4 pcs of Konnect-255 are supplied free with each track.
- 4.The last bar of each track is attached with Konnect-125 and can be removed if needed.



FF150-3222E



Model	Stock#	Fitting Tire Size	Numbers of Cross Bar(pcs/1/2pair)	Wt./pair kg
3222E-93	FF150 600/55-3222E-93	600/55-26.5	29	2115
	FF150 710/45-3222E-93	710/45-26.5	29	2295
	FF150 750/55-3222E-93	750/55-26.5	35	2853
	FF150 780/50-3222E-93	780/50-28.5	35	2935

※Stock* with suffix “E” at the end of the part number means the track is designed for the European market. These tracks reflect the European concept of saving energy and being friendly to the environment. European track studs supplied (60mmX50mmX32mm)

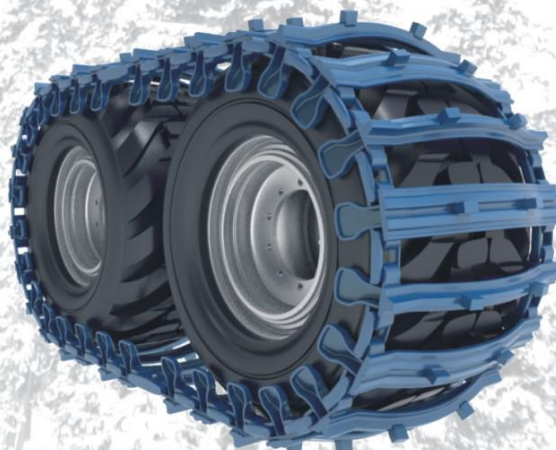
For tire sizes not listed above, please contact manufacturer or local suppliers.

MT86+FF150 Combo Tracks

1. This mixed track design provides added (FF) Forged floatation to our (MT) Mountain bars.
2. These tracks can be made with our 32mm or 28mm connector system.
3. Single alternating or dual track stud configurations are available at time of order.
4. 1 track tightener, 8 pieces Konnect-125, 4 pieces Konnect-175 and 4 pcs of Konnect-255 are supplied free with each track.
5. The last bar of each track is attached with Konnect-125 and can be removed if needed.



Model	Stock#	Fitting Tire Size	Numbers of Cross Bar(pcs/1/2pair)	Wt./pair kg
3211	MT+FF600/55-3211	600/55-26.5	30	2003
	MT+FF710/45-3211	710/45-26.5	30	2158
	MT+FF750/55-3211	750/55-26.5	36	2655
	MT+FF780/50-3211	780/50-28.5	36	2721



Model	Stock#	Fitting Tire Size	Numbers of Cross Bar(pcs/1/2pair)	Wt./pair kg
3211E-93	MT+FF600/55-3211E-93	600/55-26.5	29	1935
	MT+FF710/45-3211E-93	710/45-26.5	29	2085
	MT+FF750/55-3211E-93	750/55-26.5	35	2581
	MT+FF780/50-3211E-93	780/50-28.5	35	2645

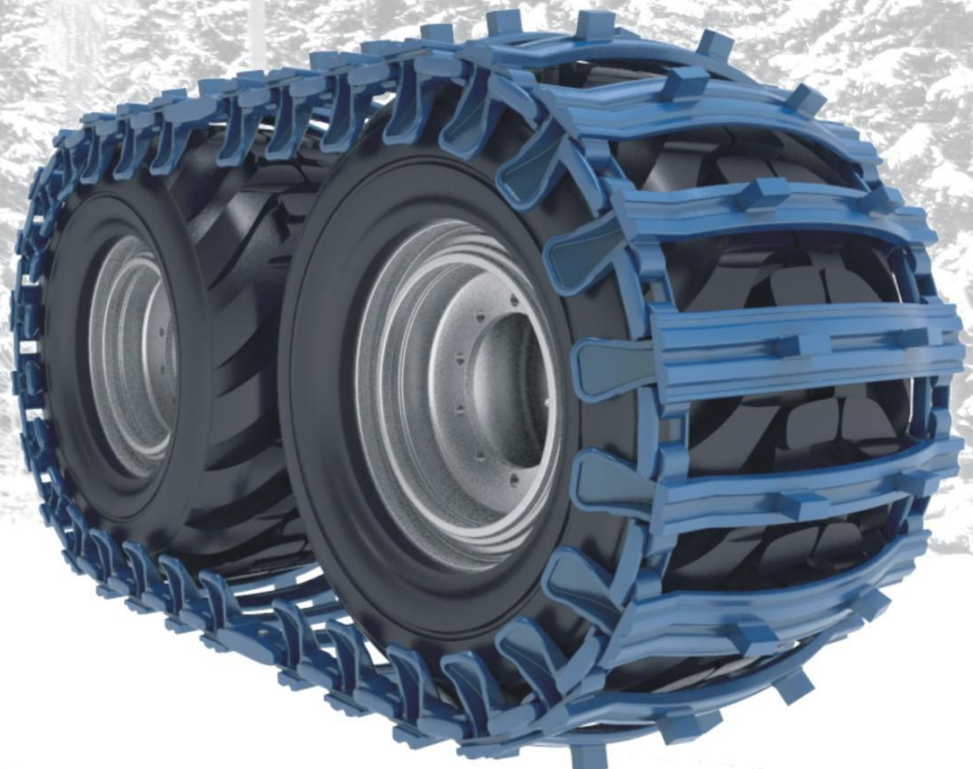
※Stock* with suffix "E" at the end of the part number means the track is designed for the European market. These tracks reflect the European concept of saving energy and being friendly to the environment. European track studs supplied (60mmX50mmX32mm/45mmx40mmx32mm)

For tire sizes not listed above, please contact manufacturer or local suppliers.

OV86+FF150 Combo Tracks

1. This mixed track design pairs our (FF) Forged floatation to our (OV) Overland low-profile bars.
2. These tracks can be made with our 32mm or 28mm connector system.
3. Single alternating or dual track stud configurations are available at time of order.
4. 1 track tightener, 8 pieces Konnect-125, 4 pieces Konnect-175 and 4 pcs of Konnect-255 are supplied free with each track.
5. The last bar of each track is attached with Konnect-125 and can be removed if needed.

Model	Stock#	Fitting Tire Size	Numbers of Cross Bar(pcs/1/2pair)	Wt./pair kg
3211	OV+FF600/55-3211	600/55-26.5	30	2080
	OV+FF710/45-3211	710/45-26.5	30	2276
	OV+FF750/55-3211	750/55-26.5	36	2802
	OV+FF780/50-3211	780/50-28.5	36	2872



OV86+SF120 Combo Tracks

1. This mixed track design brings down the weight of this combo track, making this pair more useful by staying light weight.
2. These tracks can be made with our 32mm or 28mm connector system.
3. Single alternating or dual track stud configurations are available at time of order.
4. 1 track tightener, 8 pieces Konnect-125, 4 pieces Konnect-175 and 4 pcs of Konnect-255 are supplied free with each track.
5. The last bar of each track is attached with Konnect-125 and can be removed if needed.

Model	Stock#	Fitting Tire Size	Numbers of Cross Bar(pcs/1/2pair)	Wt./pair kg
3211E-93	OV+SF600/55-3211E-93	600/55-26.5	29	1630
	OV+SF710/45-3211E-93	710/45-26.5	29	1735
	OV+SF750/55-3211E-93	750/55-26.5	35	2141
	OV+SF780/50-3211E-93	780/50-28.5	35	2196

※Stock* with suffix "E" at the end of the part number means the track is designed for the European market. These tracks reflect the European concept of saving energy and being friendly to the environment. European track studs supplied (60mmX50mmX32mm/45mmx40mmx32mm)



For tire sizes not listed above, please contact manufacturer or local suppliers.

SINGLE TRACK



MT86 Single Wheel Tracks

1. This single wheel track has special geometry to fit both Nokian and Firestone forestry skidder tires.
2. The MT86 Mountain climbing bars in the single wheel application are the best all around.
3. 32mm forged connecting links have unmatched strength and longevity.
4. 2 large, forged track studs (75mmX60mmX32mm) per bar allow the track to climb very steep terrain.
5. Single wheels tracks require lower maintenance compared to skidder chain.
6. The last bar is adjustable for the proper fit to older tires.

Model	Stock#	Fitting Tire Size	Numbers of Cross Bar(pcs/1/2pair)	Wt./pair
				kg
	MT86 28L-26	28L-26	23	1510
	MT86 30.5-32	30.5-32	26	1815
	MT86 35.5-32	35.5-32	28	2097



For tire sizes not listed above, please contact manufacturer or local suppliers.

OV86 Single Wheel Tracks

1. This single wheel track has special geometry to fit both Nokian and Firestone forestry tires.
2. The OV86 Overland bar is a great choice for single wheel metric tires.
3. 28mm forged connecting links were designed to match the lightweight OV86 track.
4. 2 European forged track studs (60mmX50mmX32mm) per bar, allow this track to have minimal impact on the environment and good grip.
5. Single wheels tracks require lower maintenance compared to skidder chain.
6. The last bar is adjustable for the proper fit to older tires.

Model	Stock#	Fitting Tire Size	Numbers of Cross Bar(pcs/1/2pair)	Wt./pair
				kg
	OV86 28L-26	28L-26	23	1405
	OV86 30.5-32	30.5-32	26	1685
	OV86 35.5-32	35.5-32	28	1942



For tire sizes not listed above, please contact manufacturer or local suppliers.

SF120 Single Wheel Tracks



1. This single wheel track has special geometry to fit both Nokian and Firestone forestry tires.
2. The SF120 Super floatation bar is a great choice for single wheel metric tires requiring extra floatation.
3. 28mm forged connecting links were designed to match the lightweight SF120 track.
4. 2 European forged track studs (45mmx40mmx32mm) per bar, allow this track to have minimal impact on the environment and good grip.
5. Single wheels tracks require lower maintenance compared to skidder chain.
6. The last bar is adjustable for the proper fit to older tires.

Model	Stock#	Fitting Tire Size	Numbers of Cross Bar(pcs/1/2pair)	Wt./pair kg
	SF120 18.4-26	18.4-26	20	980
	SF120 28L-26	28L-26	23	1252
	SF120 30.5-32	30.5-32	26	1498
	SF120 35.5-32	35.5-32	28	1787

For tire sizes not listed above, please contact manufacturer or local suppliers.

EZ-Track

TAIGA traction's EZ tracks are patent-pending with link system covering from 22mm to 28mm. It protects tire wall perfectly.

Enduser is friendly entitled to build tracks by DIY so that his track will service his machine perfectly.



Pat.Pending

1. This track is easy to assemble.
2. This track is easy to disassemble.
3. This track is easy to adjust its length to fit tire, flame cutter is never necessary.
4. This track protects tire side perfectly, never bites rubber.
5. This track is easy to double the bars on for excellent floatation.



EZ wheel Tracks



For details and inquiry, please contact luqhchain@163.com.

Tire Chains





Eagle Jumbo produces a varieties of passenger car chains, truck chains, tractor chains, mining chains and chains of industry equipments. For details, please visit either of the websites below.

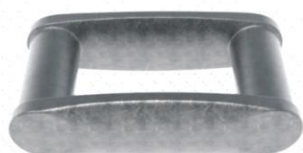


www.eaglejumbo.com
www.qualitychaincorp.com
www.qccanada.com
www.nyvab.se

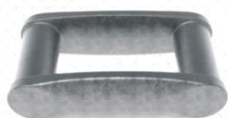
And contact: luqhchain@163.com



ACCESSORIES



Forging Link
FL-93



Forging Link
FL-85



Pad F



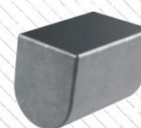
Pad S



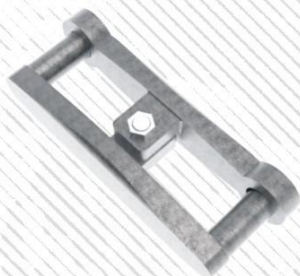
HD Stud
75x65x40mm



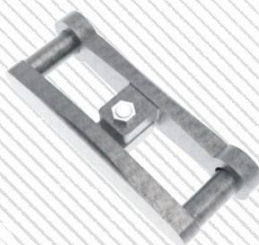
M-Stud
60x50x32mm



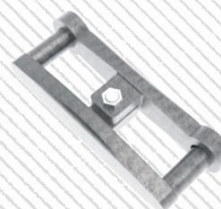
EU-Stud
45x40x32mm



Konnector
K-225



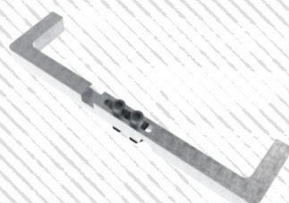
Konnector
K-175



Konnector
K-125



Flat Link



Mounting Hook



Mounting Tool





Eagle Jumbo Co., Ltd.

General Industry Co., Ltd.

232 Chang'an Road, Deqing, Huzhou
Zhejiang, China 313200

Tel: +86-572-8682999

Fax: +86-572-8682777

Email: lughchain@163.com

www.eaglejumbo.com

Quality Chain Corp

3365 NE 79th Ave
Hillsboro, OR 97124, USA

Tel: 503-614-9664

Mobile: 503-705-1979

Email: joe.casper@qualitychaincorp.com

www.qualitychaincorp.com

NYVAB

Mollekulla 1681

SE-343 90th ALMHULT, Sweden

Tel. +46 476 18 46 90

Email: info@nyvab.se

www.nyvab.se

QCCanada

2133 191 Street, Unit #1

Surrey, BC, Canada V3Z 3M3

Toll Free Phone: 1-888-507-9734

Toll Free Fax: 1-888-507-9724

Email: wes@qccanada.com

www.qccanada.com

